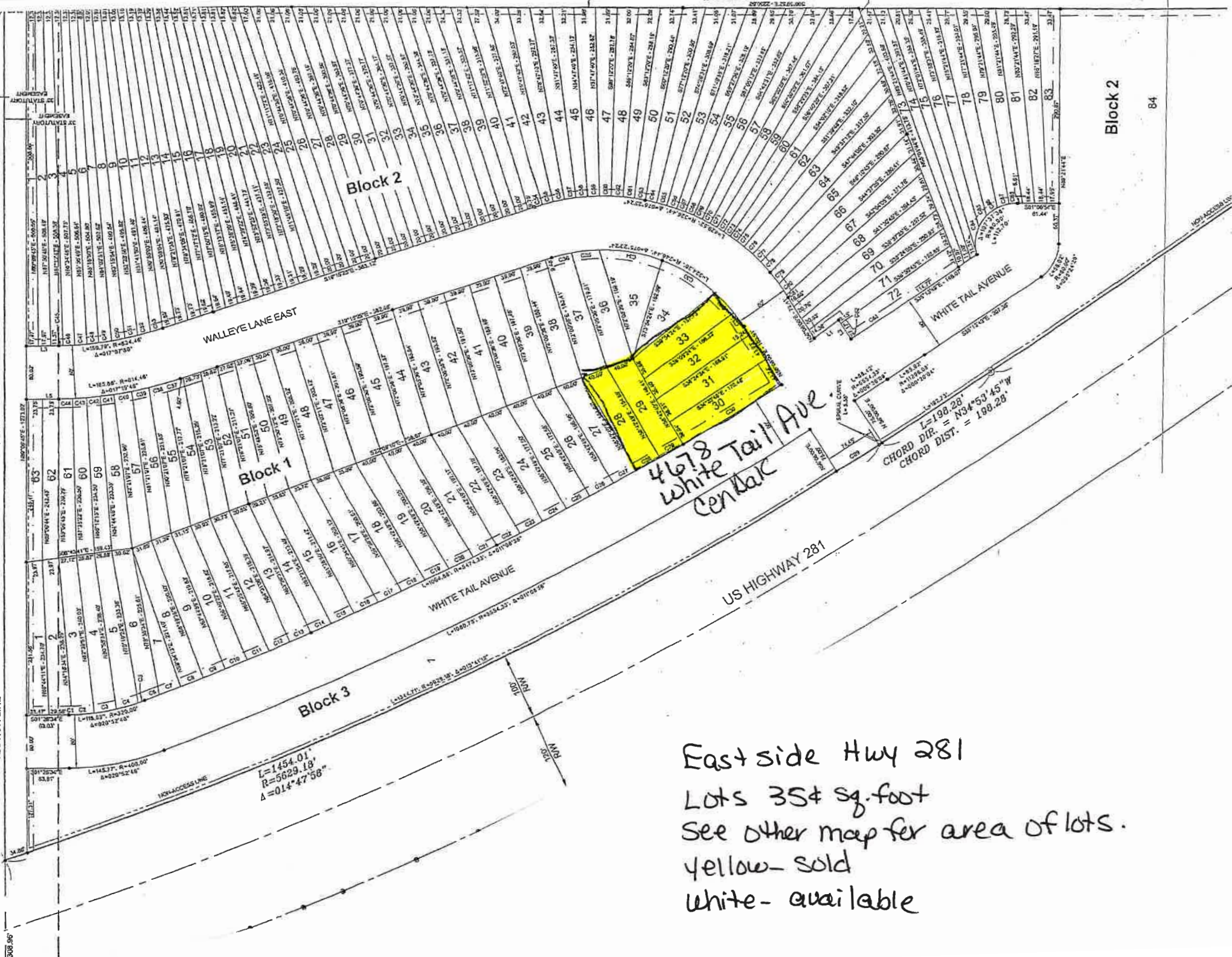


1204.17'



Block 2

Block 1

Block 3

Block 2

84

4678 White Tail Ave.
Centrac

East side Hwy 281
 Lots 35± sq.foot
 See other map for area of lots.
 yellow- sold
 white- available

$L=1454.01'$
 $R=5629.18'$
 $\Delta=014^{\circ}47'56''$

$L=198.28'$
 $CHORD DIR. = N34^{\circ}53'45''W$
 $CHORD DIST. = 188.28'$

US HIGHWAY 281

WHITE TAIL AVENUE

WALLEY LANE EAST

WHITE TAIL AVENUE

NOT ACCESSIBLE

APR 2007

308.96'

See other map for area of lots.
 East side Hwy 281 Lots 35¢ sq. foot

PARCEL AREA DATA		
BLOCK	LOT	AREA (SF)
1	1	6877
1	2	6837
1	3	7310
1	4	7280
1	5	7152
1	6	7337
1	7	3795
1	8	7454
1	9	7370
1	10	7284
1	11	7198
1	12	7104
1	13	7011
1	14	6667
1	16	7883
1	16	7806
1	17	7722
1	18	7629
1	19	7881
1	20	7832
1	21	7073
1	22	7502
1	23	7320
1	24	7126
1	25	6922
1	26	6708
1	27	6478
1	28	6240
1	29	5990
1	30	7253
1	31	6967
1	32	6345
1	33	6149
1	34	7004
1	35	7535
1	36	0978
1	37	7257
1	38	7357
1	39	7437
1	40	7518

PARCEL AREA DATA		
BLOCK	LOT	AREA (SF)
1	41	7599
1	42	7679
1	43	7760
1	44	7841
1	45	7921
1	46	8002
1	47	7268
1	48	7324
1	49	6785
1	50	6501
1	51	6877
1	52	6011
1	53	6082
1	54	6181
1	55	6288
1	56	6412
1	57	6584
1	58	6995
1	59	6574
1	60	5601
1	01	5873
1	02	5722
1	03	5794

PARCEL AREA DATA		
BLOCK	LOT	AREA (SF)
2	1	7708
2	2	7707
2	3	7708
2	4	7703
2	5	7890
2	6	7667
2	7	7290
2	8	8167
2	9	8109
2	10	8039
2	11	7958
2	12	7858
2	13	7777
2	14	7894
2	15	7609
2	16	7528
2	17	7451
2	18	7375
2	19	7303
2	20	7232
2	21	7164
2	22	7088
2	23	7401
2	24	7309
2	25	7708
2	26	8273
2	27	8141
2	28	8009
2	29	7877
2	30	7745
2	31	7613
2	32	7481
2	33	7349
2	34	7217
2	35	7085
2	36	6953
2	37	6822
2	38	6690
2	39	7063
2	40	6912

PARCEL AREA DATA		
BLOCK	LOT	AREA (SF)
2	41	7480
2	42	7539
2	43	7337
2	44	7147
2	45	7017
2	46	6941
2	47	6920
2	48	6952
2	49	7038
2	50	7180
2	51	7381
2	52	6897
2	53	7031
2	54	6529
2	55	6820
2	56	7158
2	57	7549
2	58	6877
2	59	6990
2	60	6680
2	61	7177
2	62	6996
2	63	7155
2	64	7200
2	65	7390
2	66	7051
2	67	6762
2	68	6519
2	69	6301
2	70	6099
2	71	5028
2	72	5090
2	73	6291
2	74	8117
2	75	5953
2	76	6875
2	77	6453
2	78	7342
2	79	7071
2	80	6027